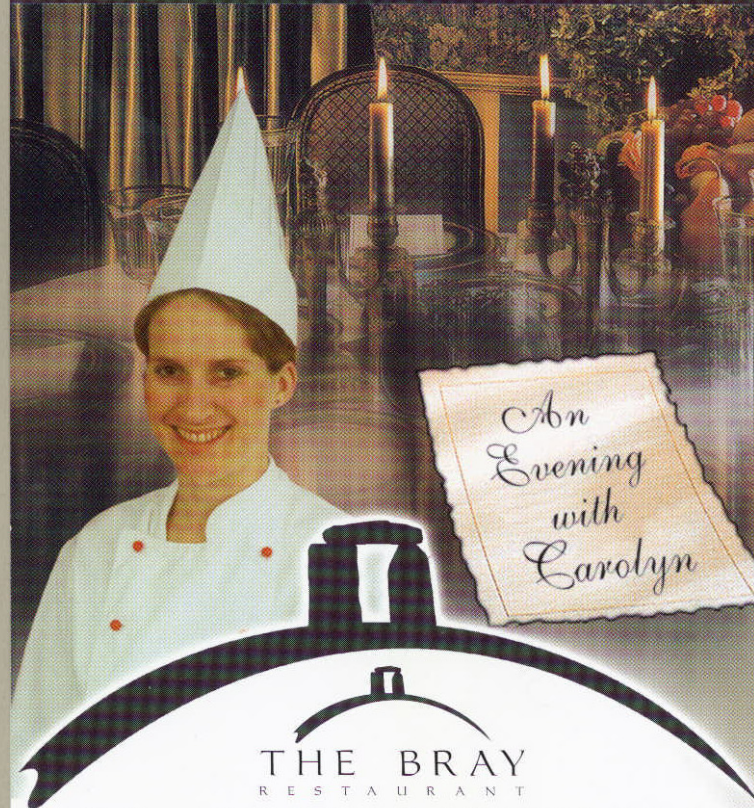


# An evening with Carolyn



## An evening with Carolyn

The Metropolitan Hotel-Dubai welcomes Carolyn Robb, former Chef of H.R.H. Prince Charles for 12 years. Ms. Robb is currently working with Spinneys in developing "Chef's Larders", thereby introducing new types of cuisines in Dubai. A private house entertainment has been planned at the Bray where guests from both the Hotel and Spinneys will be treated to a gourmet extravaganza limited to 45 guests a night. The evening will feature different wines with each magnificent course. In addition, guests will also get to know the ingredients of Carolyn's recipes that are served during the evening and talk to her in person.



THE BRAY  
RESTAURANT

For 11 years *Carolyn Robb* was the chef to HRH The Prince of Wales. The former royal chef, now part of 'Chefs Larder,' introduces her famed dishes to Dubai. Savor her grand recipes at the elegant *Bray Restaurant* priced at Dhs. 285 nett per person from 2nd to 6th June, where you will be treated to a gourmet extravaganza with an assortment of beverages with each magnificent course. Plus, you can meet the illustrious Carolyn face-to-face and get to know the ingredients of the evening's dishes. So get ready for the royal treat at the Bray.

Space is limited, for reservations contact  
Beth Luna on 4076901.

## THE METROPOLITAN HOTEL-DUBAI



Sheikh Zayed Road, P.O.Box: 26666, Dubai - U.A.E., Tel: 04 3430000, Fax: 04 3431146,  
e-mail: methotel@emirates.net.ae, Website: www.methotels.com







THE BRAY  
RESTAURANT

*An Evening with Carolyn*

*Chargrilled Wild Asparagus, Balmoral Ceps and Artichoke Hearts*  
with balsamic glazed vine tomatoes and a light truffle vinaigrette



*Hot Roast Salmon from Loch Fyne*  
with Ratt potatoes woodland herbs and crème fraiche with lime zest



*Searred Guinea Fowl Supreme on a Crisp Leek Risotto Cake*  
served with a thyme and shallot jus and minted spring garden vegetables



*Cheeses with Organic Oatcakes and Bramley Chutney*



*Chocolate "Assiette"*  
*Toblerone Ice Cream*  
*White Chocolate Mousse*  
*Philadelphia Cheesecake*  
*Warm Pecan Brownies*



*Vanilla Coffee*  
*Belgian Chocolates*